

# Arkansas Arts Academy

The Arkansas Arts Academy redevelopment designed by Hight Jackson Associates consists both new construction and renovation of an existing school campus.

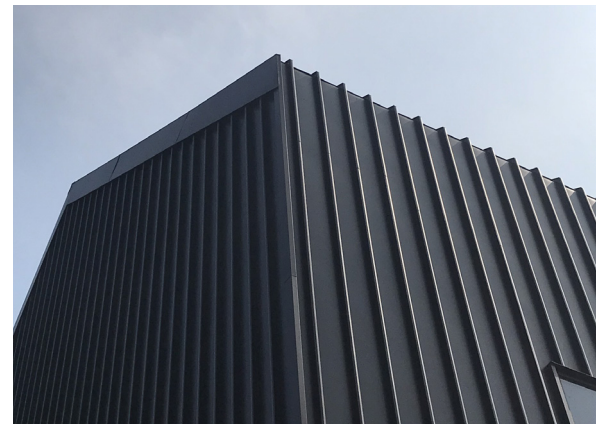
|            |   |
|------------|---|
| Project:   | Arkansas Arts Academy<br>Rogers, AR     |
| Use:       | Education / Culture                     |
| Architect: | Hight Jackson<br>Associates, Rogers, AR |
| Product:   | Morin Symmetry<br>Roof Panels           |

## Perfect Symmetry

The new construction both complements and reflects the character of the historic neighbourhood with a repeated gable form that is wrapped in a standing-seam metal cladding which extends over the roof and down the external walls.



The architects chose to specify the metal cladding from Morin, using a 22 ga Symmetry panel in Dark Bronze. The design intent was to create a seamless transition detail where the wall and roof converge. Morin's Symmetry panel enabled a neat, weathertight seam from ridge to eave by seaming the cap (with in-line hot melt sealant) to the standing seam side legs of the metal cladding. This technique ensures that the clips never come in contact with the hot melt sealant, thus maintaining the weathertight seal. In addition to this, there is a unique cleat detail at the eaves to roof to wall eave transition. A 1.5" seam cap provides a crisp bold seam and creates a unique shadow on both the roof and the walls.



HQ / East 685 Middle Street, Bristol, CT 06010 T: 1-800-640-9501  
West 10707 Commerce Way, Fontana, CA 92337 T: 1-800-700-6140  
South 1975 Eidson Drive, DeLand, FL 32724 T: 1-800-640-9501

[www.morincorp.com](http://www.morincorp.com) #morincorp



**Morin**®  
A Kingspan Group Company